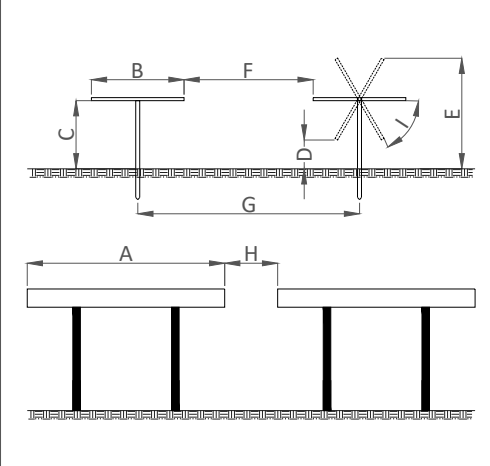


RACKING CROSS SECTION (NTS)



A	RACKING LENGTH	33.997m
B	RACKING WIDTH	2.256m
C	NOMINAL PANEL HEIGHT	1.75m
D	MINIMUM PANEL HEIGHT	0.886m
E	MAXIMUM PANEL HEIGHT	2.614m
F	AISLE WIDTH	5.004m
G	PITCH WIDTH	7.260m
H	RACKING SPACING	0.35m
I	PLANE TILT	+/-50°
GROUND COVERAGE RATIO		31.1%

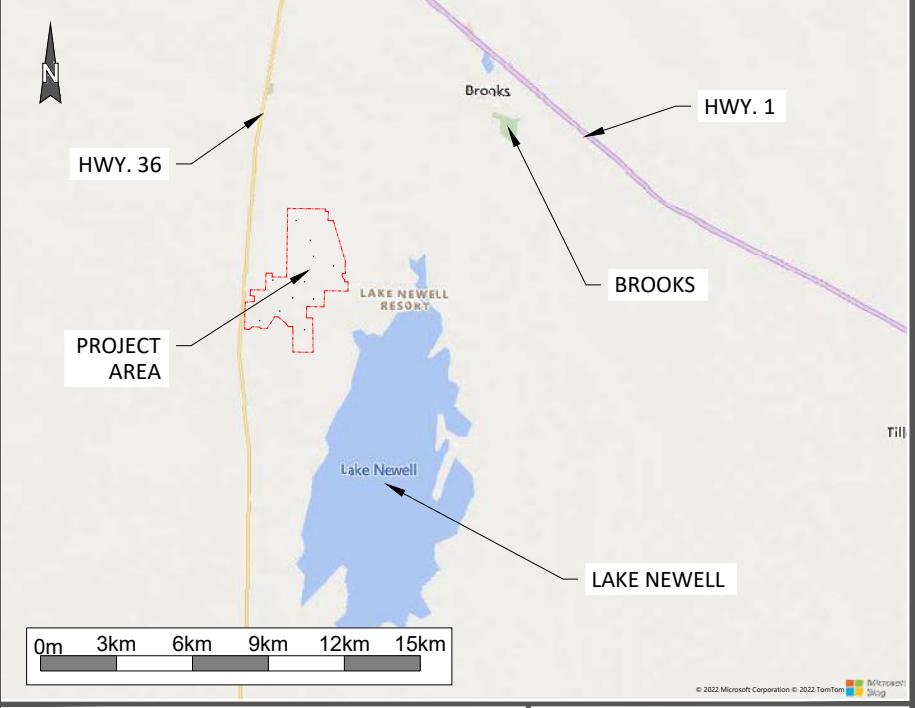
LEGEND

- PROJECT AREA
- FENCE
- FENCE SETBACK (10M)
- MODULE
- ACCESS ROAD
- PROPERTY LINE SETBACK (6m)
- FORTIS LINE
- FORTIS POLE
- FORTIS SETBACK (8m)
- ABANDONED WELL
- REGISTERED RIGHT OF WAY
- WELL LEASE
- ENCUMBRANCE
- ROAD SETBACK (30m)
- HIGHWAY 36 SETBACK (80m)
- WETLAND CLASS II
- WETLAND CLASS III
- WETLAND CLASS IV
- WETLAND CLASS V
- WETLAND SETBACK (100m)
- LAKE NEWELL SETBACK (1000m)
- INVERTER/TRANSFORMER SUBSTATION

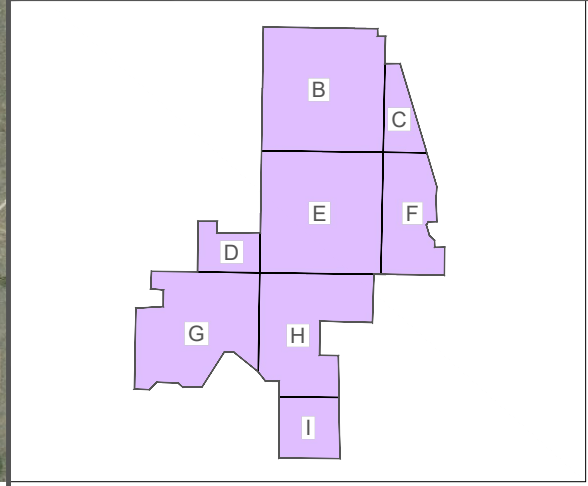
NOTES

1. Utility infrastructure is premised on available data sets and is subject to ground truthing
2. Inverter/Transformer unit Sunny Central SC4600UP

REGIONAL MAP



KEY PLAN



PRELIMINARY:
NOT FOR CONSTRUCTION

COORDINATES:
50.501degN, 111.990degW

DATE:
JULY 25, 2023

SINGLE AXIS TRACKER CONFIGURATION TABLE

FENCED AREA (ha)	FENCE LENGTH (m)	TRACKER 1x27 QUANTITY	MODULE RATED OUTPUT (W)	MODULE QUANTITY	INVERTER/TRANSFORMER QUANTITY	INVERTER CAPACITY (MWac)	DC CAPACITY (MWdc)	GRID CAPACITY (MWac)	DC/AC (GRID) RATIO
1096.1	37,476	32,802	545	885,654	100	460.00	482.68	450	1.07

DEVELOPER:

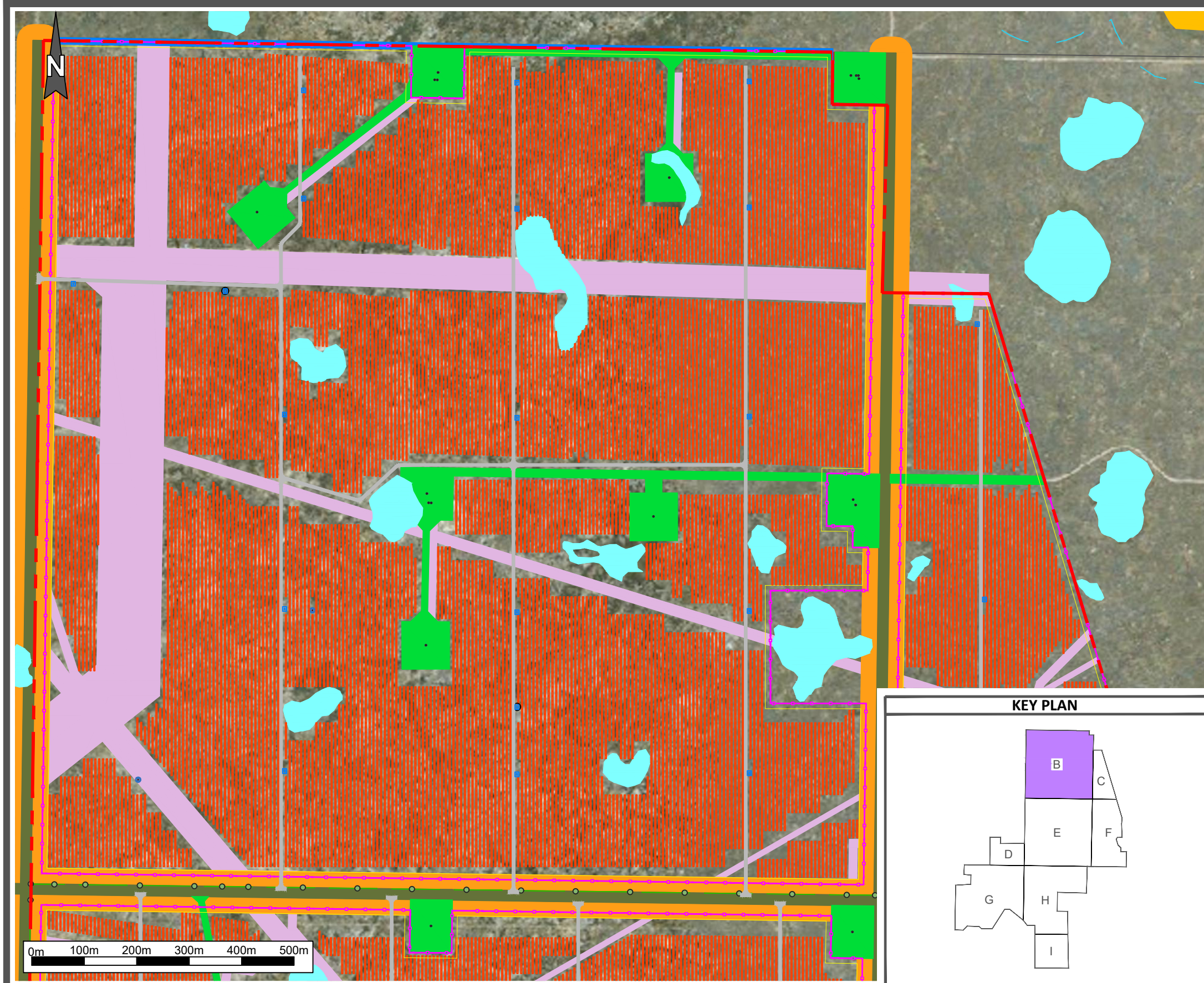
PREPARED BY:

DRAWING TITLE:
**RAINIER SOLAR FARM
SINGLE AXIS TRACKER LAYOUT**

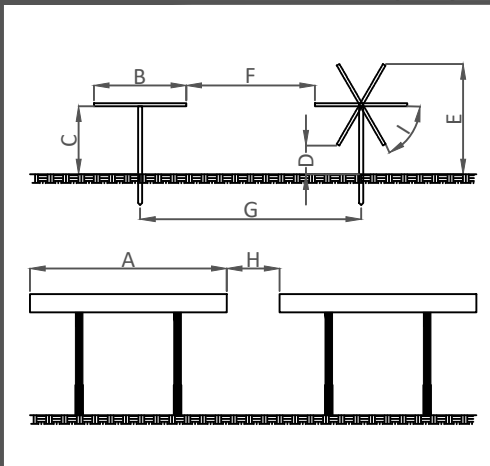
DRAWING NUMBER: RAINIER -LAY-001

SHEET 1 OF 1

REVISION B



RACKING CROSS SECTION (NTS)



A	RACKING LENGTH	33.997m
B	RACKING WIDTH	2.256m
C	NOMINAL PANEL HEIGHT	1.75m
D	MINIMUM PANEL HEIGHT	0.886m
E	MAXIMUM PANEL HEIGHT	2.614m
F	AISLE WIDTH	5.004m
G	PITCH WIDTH	7.260m
H	RACKING SPACING	0.35m
I	PLANE TILT	+/-50°
GROUND COVERAGE RATIO		31.1%

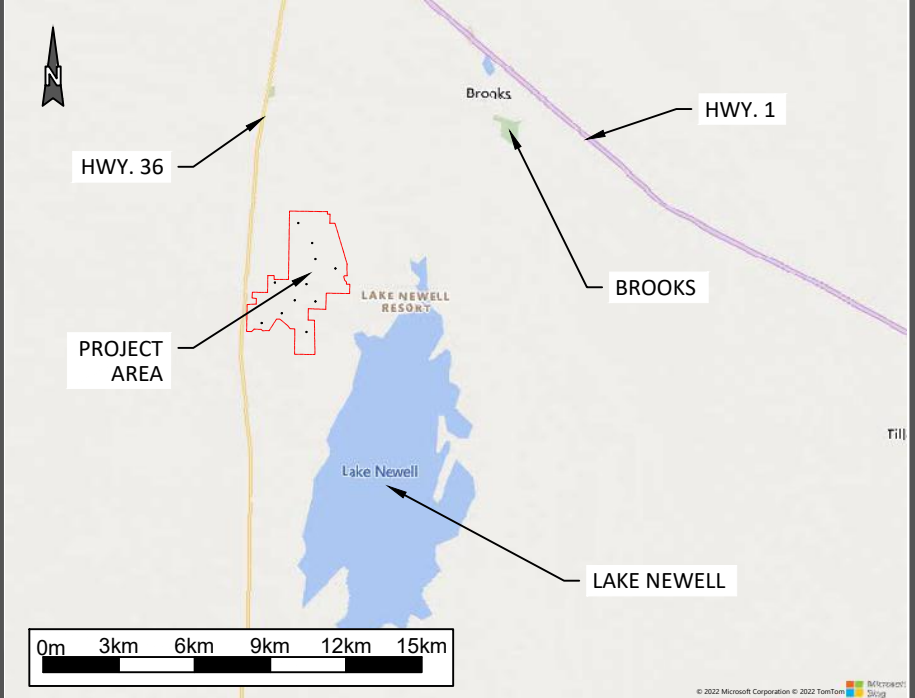
LEGEND

- PROJECT AREA
- FENCE
- FENCE SETBACK (10M)
- MODULE
- ACCESS ROAD
- PROPERTY LINE SETBACK (6m)
- FORTIS LINE
- FORTIS POLE
- FORTIS SETBACK (8m)
- ABANDONED WELL
- REGISTERED RIGHT OF WAY
- WELL LEASE
- ENCUMBRANCE
- ROAD SETBACK (30m)
- HIGHWAY 36 SETBACK (80m)
- WETLAND CLASS II
- WETLAND CLASS III
- WETLAND CLASS IV
- WETLAND CLASS V
- WETLAND SETBACK (100m)
- LAKE NEWELL SETBACK (1000m)
- INVERTER/TRANSFORMER SUBSTATION

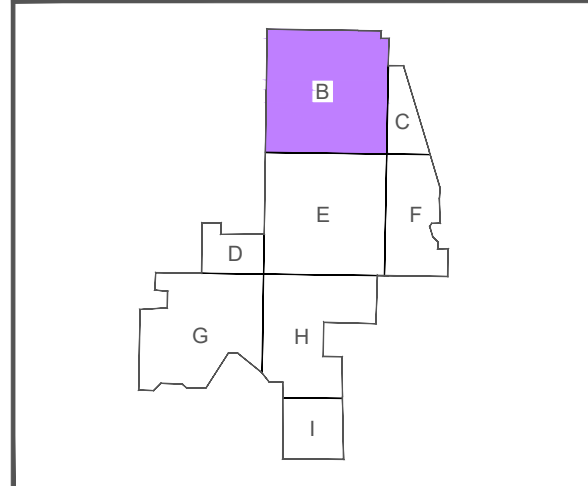
NOTES

1. Utility infrastructure is premised on available data sets and is subject to ground truthing
2. Inverter/Transformer unit Sunny Central SC4600UP

REGIONAL MAP



KEY PLAN



PRELIMINARY:
NOT FOR CONSTRUCTION

COORDINATES:
50.501degN, 111.990degW

DATE:
JULY 25, 2023

SINGLE AXIS TRACKER CONFIGURATION TABLE

FENCED AREA (ha)	FENCE LENGTH (m)	TRACKER 1x27 QUANTITY	MODULE RATED OUTPUT (W)	MODULE QUANTITY	INVERTER/TRANSFORMER QUANTITY	INVERTER CAPACITY (MWac)	DC CAPACITY (MWdc)	GRID CAPACITY (MWac)	DC/AC (GRID) RATIO
1096.1	37,476	32,802	545	885,654	100	460.00	482.68	450	1.07

DEVELOPER:

D I C D E

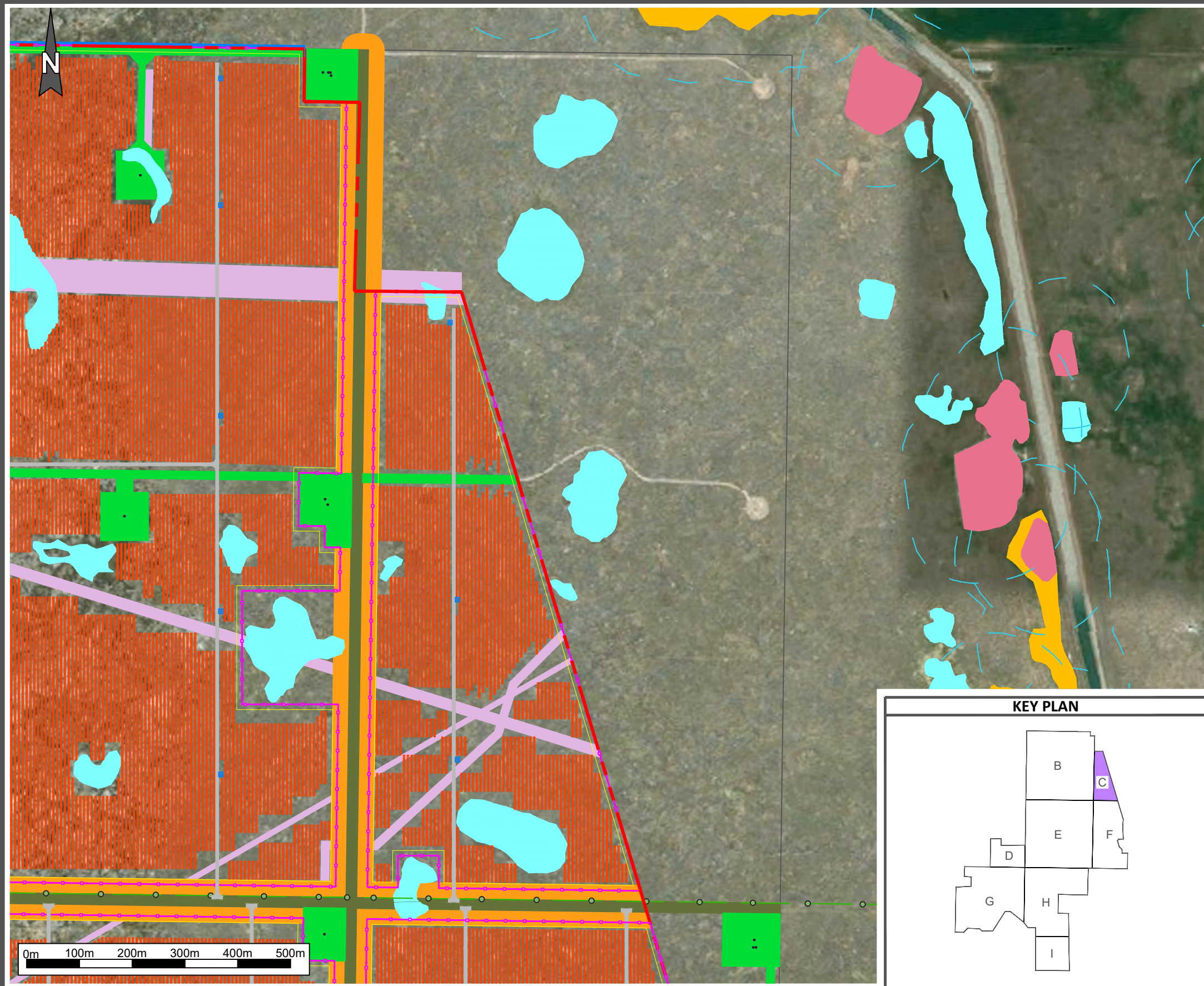
PREPARED BY:

SABR Energy Consulting Inc.

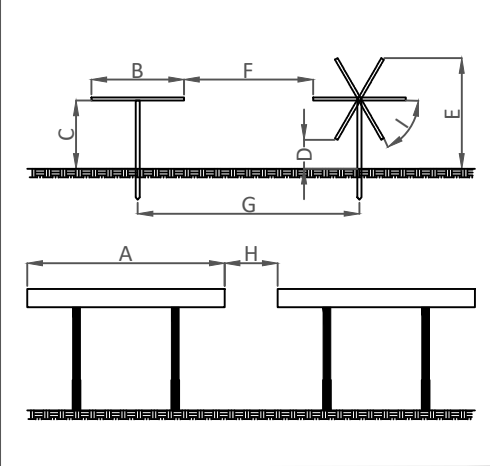
DRAWING TITLE:
**RAINIER SOLAR FARM
SINGLE AXIS TRACKER LAYOUT**

DRAWING NUMBER: RAINIER -LAY-001-B

SHEET 1 OF 1 **REVISION** B



RACKING CROSS SECTION (NTS)



A	RACKING LENGTH	33.997m
B	RACKING WIDTH	2.256m
C	NOMINAL PANEL HEIGHT	1.75m
D	MINIMUM PANEL HEIGHT	0.886m
E	MAXIMUM PANEL HEIGHT	2.614m
F	AISE WIDTH	5.004m
G	PITCH WIDTH	7.260m
H	RACKING SPACING	0.35m
I	PLANE TILT	+/-50°
GROUND COVERAGE RATIO		31.1%

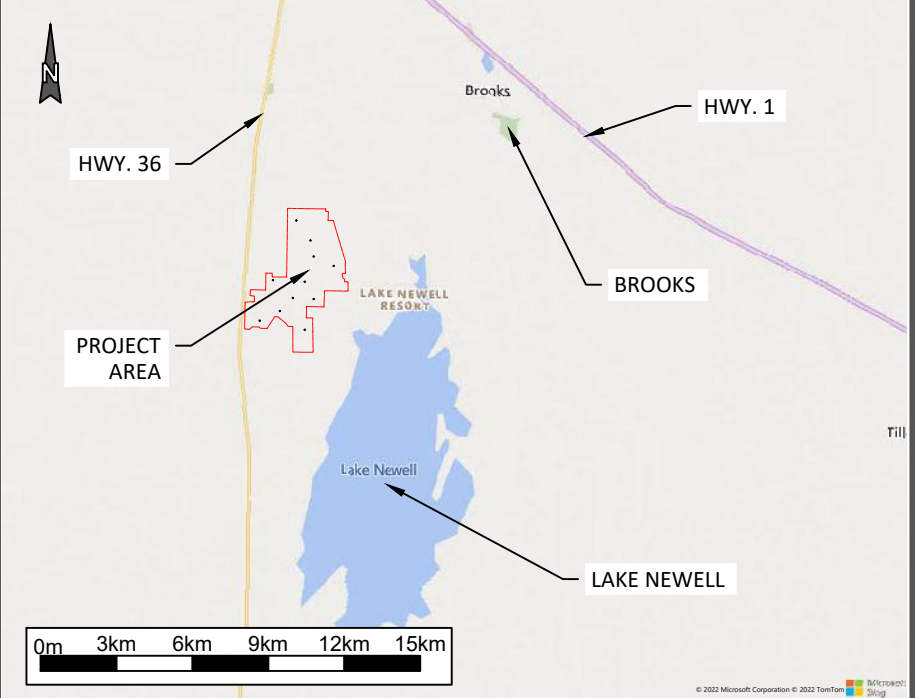
LEGEND

- PROJECT AREA
- FENCE
- FENCE SETBACK (10M)
- MODULE
- ACCESS ROAD
- PROPERTY LINE SETBACK (6m)
- FORTIS LINE
- FORTIS POLE
- FORTIS SETBACK (8m)
- ABANDONED WELL
- REGISTERED RIGHT OF WAY
- WELL LEASE
- ENCUMBRANCE
- ROAD SETBACK (30m)
- HIGHWAY 36 SETBACK (80m)
- WETLAND CLASS II
- WETLAND CLASS III
- WETLAND CLASS IV
- WETLAND CLASS V
- WETLAND SETBACK (100m)
- LAKE NEWELL SETBACK (1000m)
- INVERTER/TRANSFORMER SUBSTATION

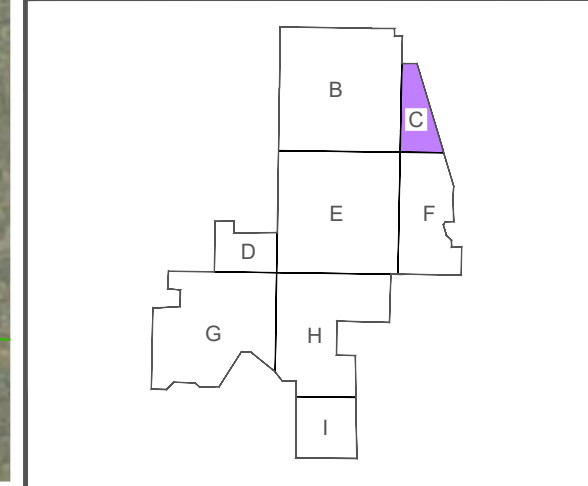
NOTES

1. Utility infrastructure is premised on available data sets and is subject to ground truthing
2. Inverter/Transformer unit Sunny Central SC4600UP

REGIONAL MAP



KEY PLAN



**PRELIMINARY:
NOT FOR CONSTRUCTION**

COORDINATES:
50.501degN, 111.990degW

DATE:
JULY 25, 2023

SINGLE AXIS TRACKER CONFIGURATION TABLE

FENCED AREA (ha)	FENCE LENGTH (m)	TRACKER 1x27 QUANTITY	MODULE RATED OUTPUT (W)	MODULE QUANTITY	INVERTER/TRANSFORMER QUANTITY	INVERTER CAPACITY (MWac)	DC CAPACITY (MWdc)	GRID CAPACITY (MWac)	DC/AC (GRID) RATIO
1096.1	37,476	32,802	545	885,654	100	460.00	482.68	450	1.07

DEVELOPER:



PREPARED BY:



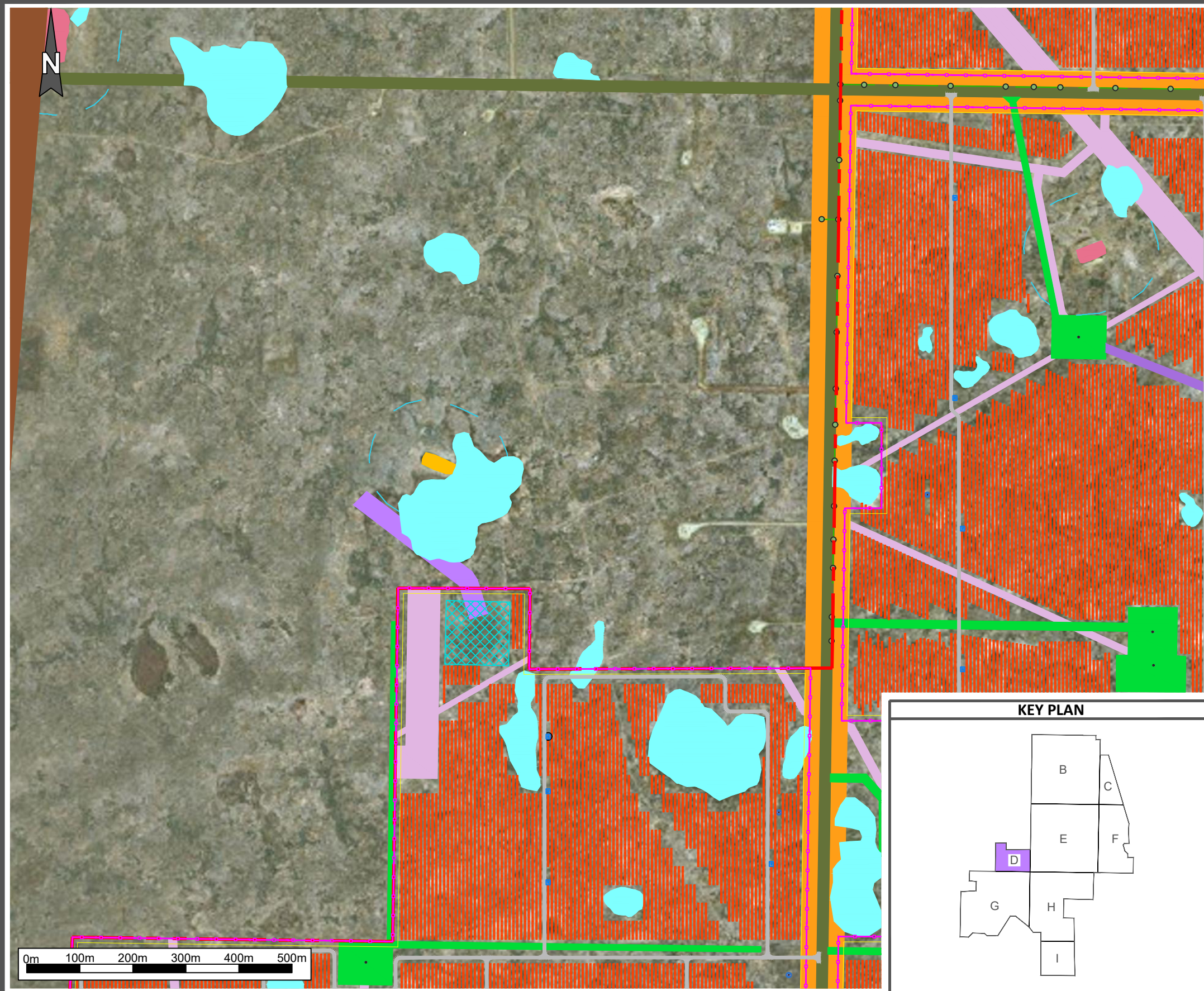
DRAWING TITLE:

**RAINIER SOLAR FARM
SINGLE AXIS TRACKER LAYOUT**

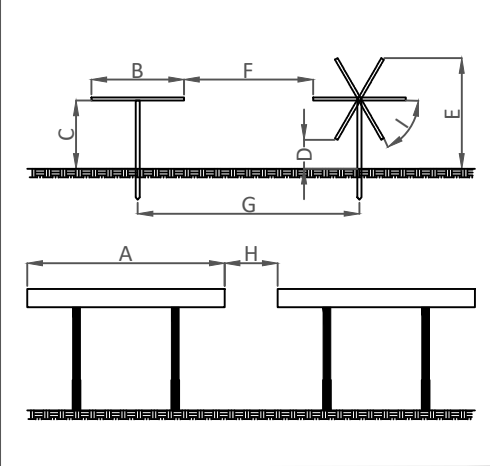
DRAWING NUMBER: RAINIER -LAY-001-C

SHEET: 1 OF 1

REVISION: B



RACKING CROSS SECTION (NTS)



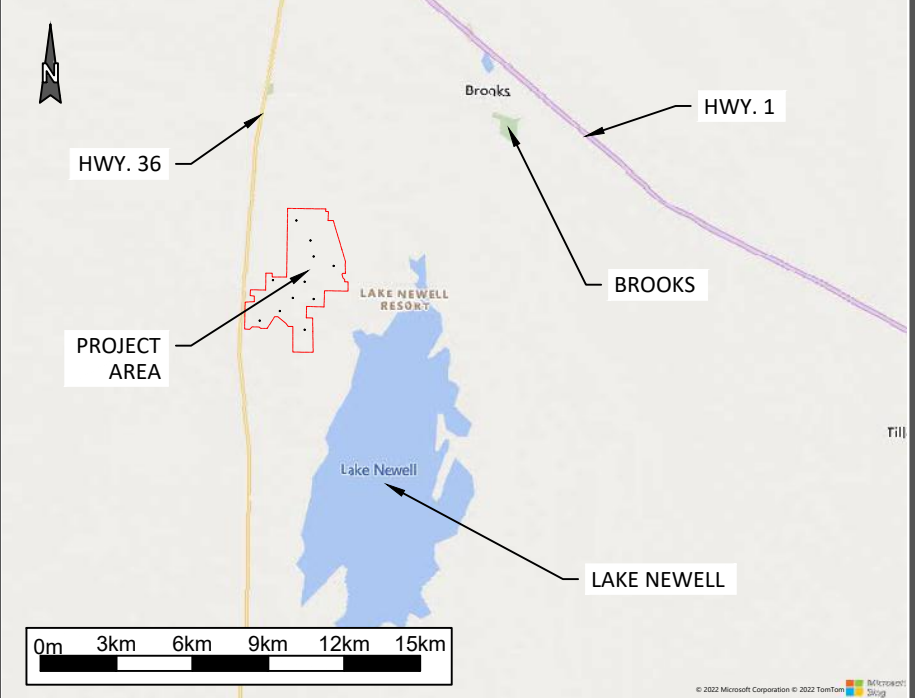
A	RACKING LENGTH	33.997m
B	RACKING WIDTH	2.256m
C	NOMINAL PANEL HEIGHT	1.75m
D	MINIMUM PANEL HEIGHT	0.886m
E	MAXIMUM PANEL HEIGHT	2.614m
F	AISLE WIDTH	5.004m
G	PITCH WIDTH	7.260m
H	RACKING SPACING	0.35m
I	PLANE TILT	+/-50°
GROUND COVERAGE RATIO		31.1%

LEGEND

- PROJECT AREA
- FENCE
- FENCE SETBACK (10M)
- MODULE
- ACCESS ROAD
- PROPERTY LINE SETBACK (6m)
- FORTIS LINE
- FORTIS POLE
- FORTIS SETBACK (8m)
- ABANDONED WELL
- REGISTERED RIGHT OF WAY
- WELL LEASE
- ENCUMBRANCE
- ROAD SETBACK (30m)
- HIGHWAY 36 SETBACK (80m)
- WETLAND CLASS II
- WETLAND CLASS III
- WETLAND CLASS IV
- WETLAND CLASS V
- WETLAND SETBACK (100m)
- LAKE NEWELL SETBACK (1000m)
- INVERTER/TRANSFORMER SUBSTATION

- NOTES**
- Utility infrastructure is premised on available data sets and is subject to ground truthing
 - Inverter/Transformer unit Sunny Central SC4600UP

REGIONAL MAP



PRELIMINARY:
NOT FOR CONSTRUCTION

COORDINATES:
50.501degN, 111.990degW

DATE:
JULY 25, 2023

SINGLE AXIS TRACKER CONFIGURATION TABLE

FENCED AREA (ha)	FENCE LENGTH (m)	TRACKER 1x27 QUANTITY	MODULE RATED OUTPUT (W)	MODULE QUANTITY	INVERTER/ TRANSFORMER QUANTITY	INVERTER CAPACITY (MWac)	DC CAPACITY (MWdc)	GRID CAPACITY (MWac)	DC/AC (GRID) RATIO
1096.1	37,476	32,802	545	885,654	100	460.00	482.68	450	1.07

DEVELOPER:

D I C D E

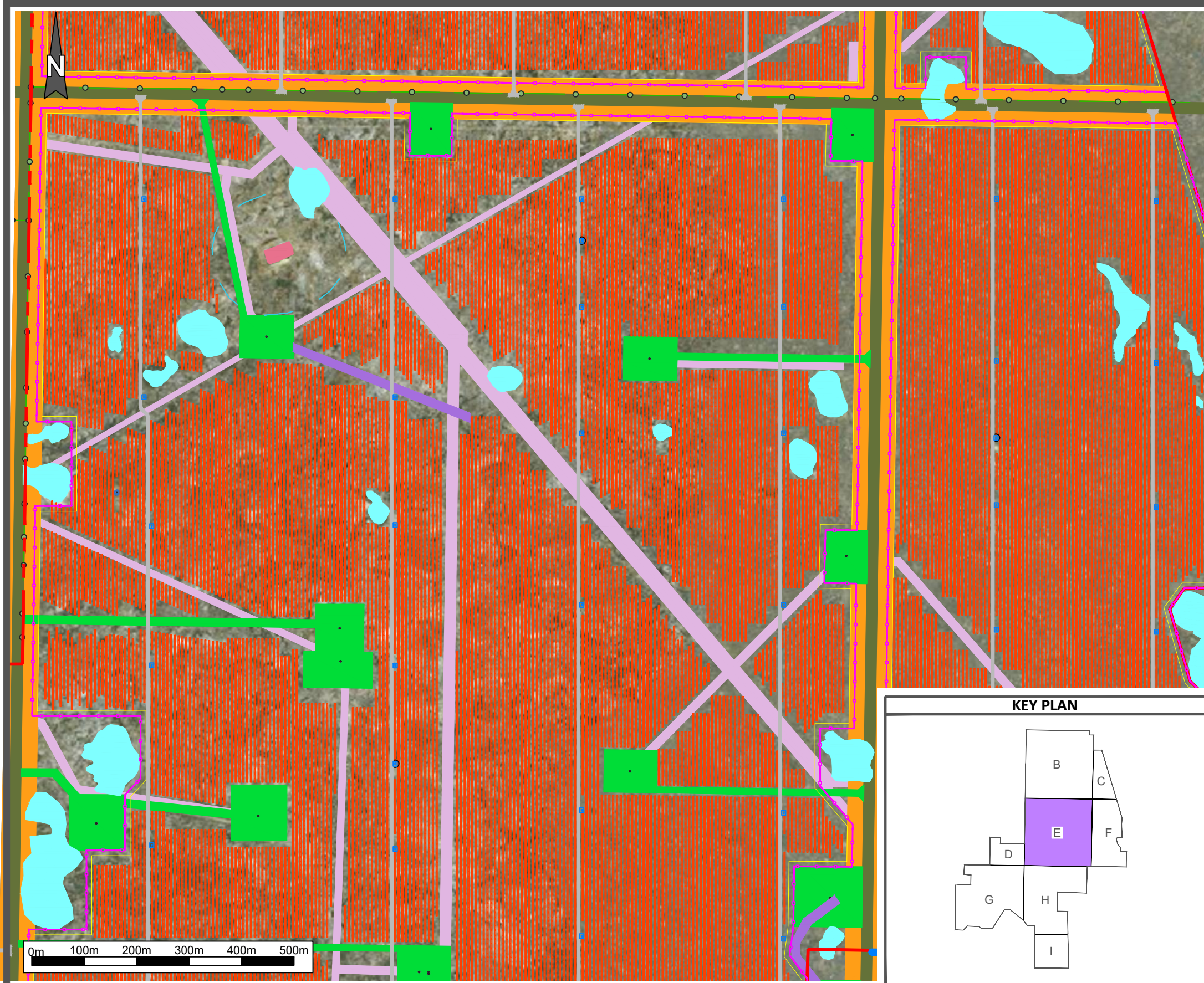
PREPARED BY:

DRAWING TITLE:
**RAINIER SOLAR FARM
SINGLE AXIS TRACKER LAYOUT**

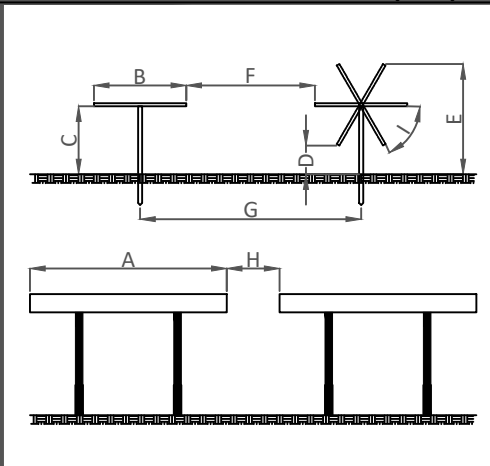
DRAWING NUMBER:
RAINIER -LAY-001-D

SHEET
1 OF 1

REVISION
B



RACKING CROSS SECTION (NTS)



A	RACKING LENGTH	33.997m
B	RACKING WIDTH	2.256m
C	NOMINAL PANEL HEIGHT	1.75m
D	MINIMUM PANEL HEIGHT	0.886m
E	MAXIMUM PANEL HEIGHT	2.614m
F	AISLE WIDTH	5.004m
G	PITCH WIDTH	7.260m
H	RACKING SPACING	0.35m
I	PLANE TILT	+/-50°
GROUND COVERAGE RATIO		31.1%

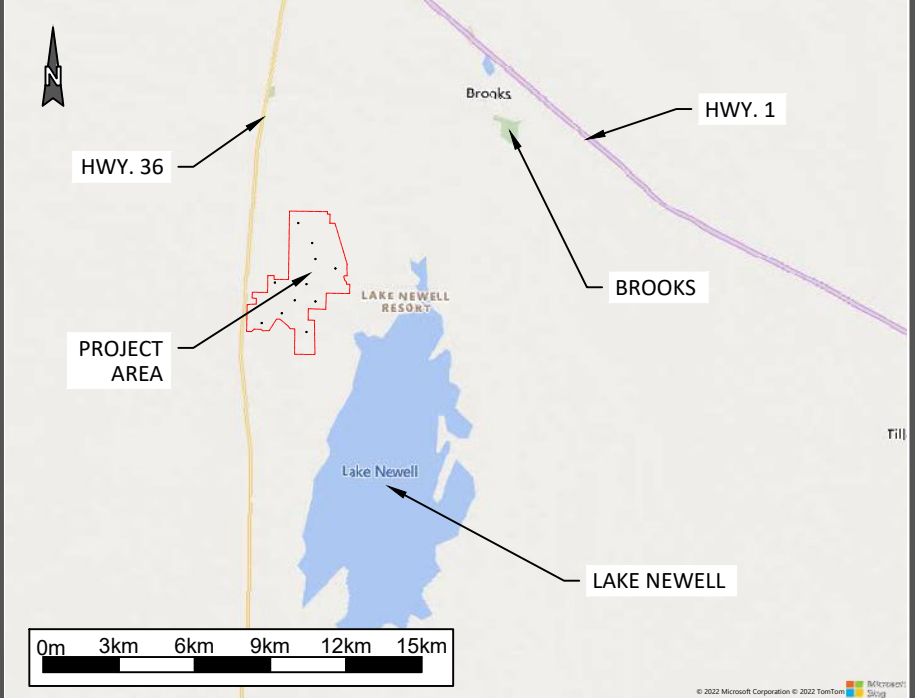
LEGEND

- PROJECT AREA
- FENCE
- FENCE SETBACK (10M)
- MODULE
- ACCESS ROAD
- PROPERTY LINE SETBACK (6m)
- FORTIS LINE
- FORTIS POLE
- FORTIS SETBACK (8m)
- ABANDONED WELL
- REGISTERED RIGHT OF WAY
- WELL LEASE
- ENCUMBRANCE
- ROAD SETBACK (30m)
- HIGHWAY 36 SETBACK (80m)
- WETLAND CLASS II
- WETLAND CLASS III
- WETLAND CLASS IV
- WETLAND CLASS V
- WETLAND SETBACK (100m)
- LAKE NEWELL SETBACK (1000m)
- INVERTER/TRANSFORMER SUBSTATION

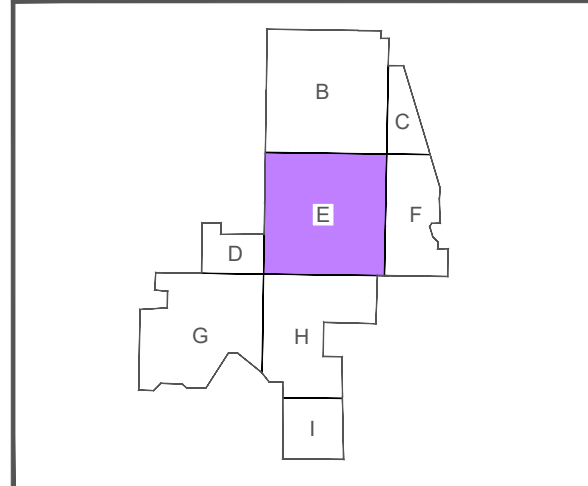
NOTES

1. Utility infrastructure is premised on available data sets and is subject to ground truthing
2. Inverter/Transformer unit Sunny Central SC4600UP

REGIONAL MAP



KEY PLAN



PRELIMINARY:
NOT FOR CONSTRUCTION

COORDINATES:
50.501degN, 111.990degW

DATE:
JULY 25, 2023

SINGLE AXIS TRACKER CONFIGURATION TABLE									
FENCED AREA (ha)	FENCE LENGTH (m)	TRACKER 1x27 QUANTITY	MODULE RATED OUTPUT (W)	MODULE QUANTITY	INVERTER/TRANSFORMER QUANTITY	INVERTER CAPACITY (MWac)	DC CAPACITY (MWdc)	GRID CAPACITY (MWac)	DC/AC (GRID) RATIO
1096.1	37,476	32,802	545	885,654	100	460.00	482.68	450	1.07

DEVELOPER:

D I C D E

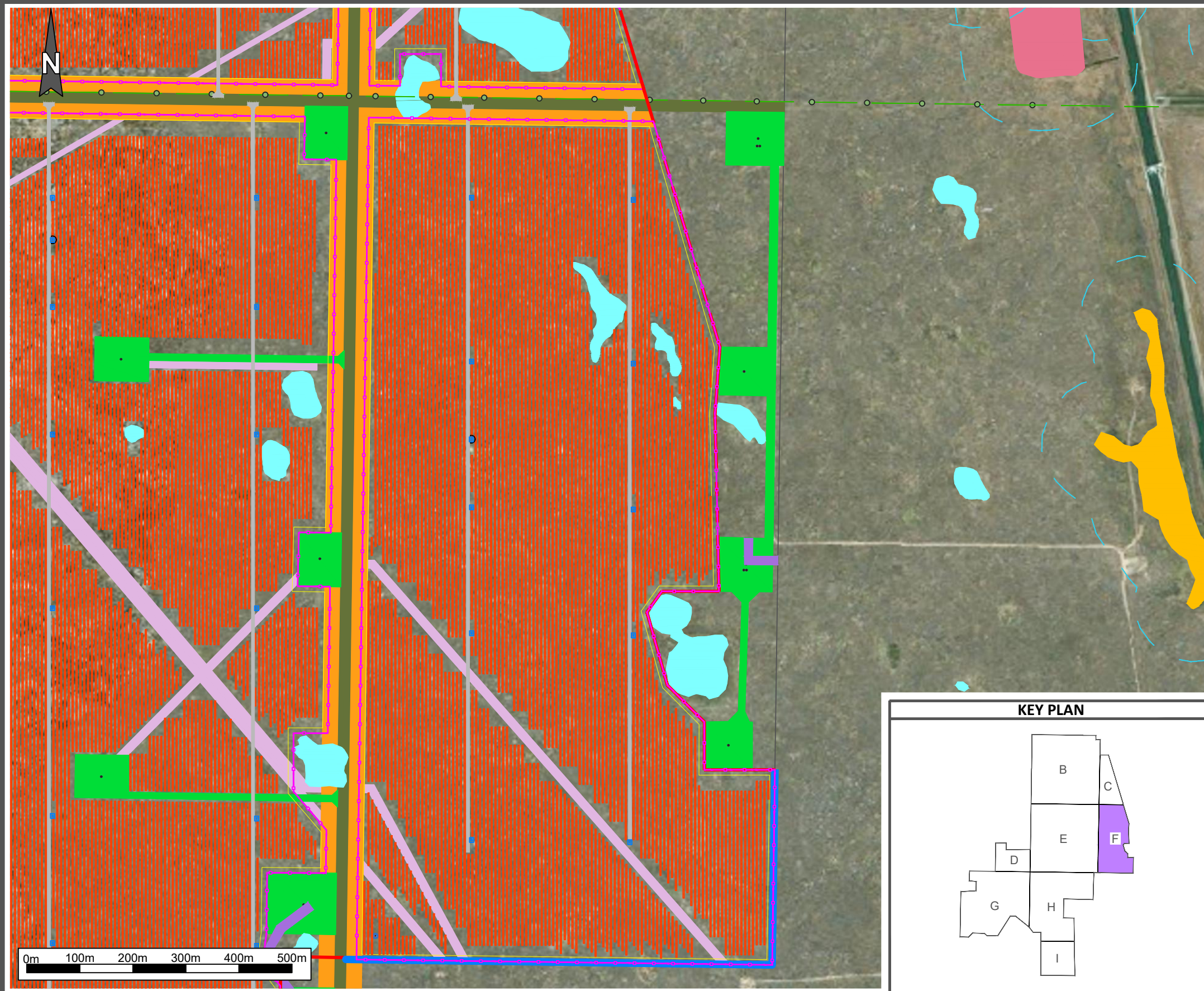
PREPARED BY:

DRAWING TITLE:
**RAINIER SOLAR FARM
SINGLE AXIS TRACKER LAYOUT**

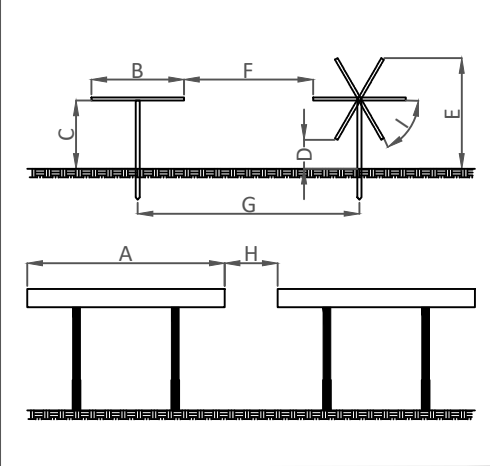
DRAWING NUMBER:
RAINIER -LAY-001-E

SHEET
1 OF 1

REVISION
B



RACKING CROSS SECTION (NTS)



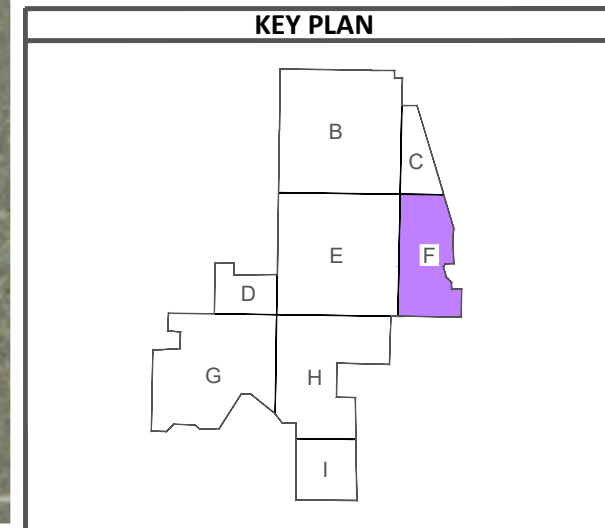
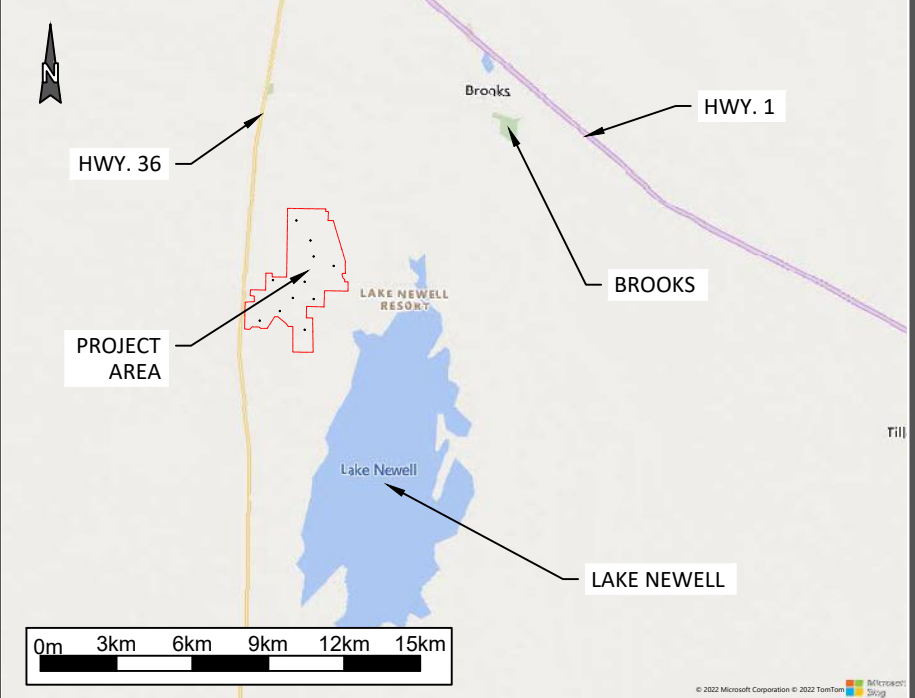
A	RACKING LENGTH	33.997m
B	RACKING WIDTH	2.256m
C	NOMINAL PANEL HEIGHT	1.75m
D	MINIMUM PANEL HEIGHT	0.886m
E	MAXIMUM PANEL HEIGHT	2.614m
F	AISLE WIDTH	5.004m
G	PITCH WIDTH	7.260m
H	RACKING SPACING	0.35m
I	PLANE TILT	+/-50°
GROUND COVERAGE RATIO		31.1%

LEGEND

- PROJECT AREA
- FENCE
- FENCE SETBACK (10M)
- MODULE
- ACCESS ROAD
- PROPERTY LINE SETBACK (6m)
- FORTIS LINE
- FORTIS POLE
- FORTIS SETBACK (8m)
- ABANDONED WELL
- REGISTERED RIGHT OF WAY
- WELL LEASE
- ENCUMBRANCE
- ROAD SETBACK (30m)
- HIGHWAY 36 SETBACK (80m)
- WETLAND CLASS II
- WETLAND CLASS III
- WETLAND CLASS IV
- WETLAND CLASS V
- WETLAND SETBACK (100m)
- LAKE NEWELL SETBACK (1000m)
- INVERTER/TRANSFORMER SUBSTATION

- NOTES**
- Utility infrastructure is premised on available data sets and is subject to ground truthing
 - Inverter/Transformer unit Sunny Central SC4600UP

REGIONAL MAP



**PRELIMINARY:
NOT FOR CONSTRUCTION**

COORDINATES:
50.501degN, 111.990degW

DATE:
JULY 25, 2023

SINGLE AXIS TRACKER CONFIGURATION TABLE

FENCED AREA (ha)	FENCE LENGTH (m)	TRACKER 1x27 QUANTITY	MODULE RATED OUTPUT (W)	MODULE QUANTITY	INVERTER/TRANSFORMER QUANTITY	INVERTER CAPACITY (MWac)	DC CAPACITY (MWdc)	GRID CAPACITY (MWac)	DC/AC (GRID) RATIO
1096.1	37,476	32,802	545	885,654	100	460.00	482.68	450	1.07

DEVELOPER:

D I C D E

PREPARED BY:

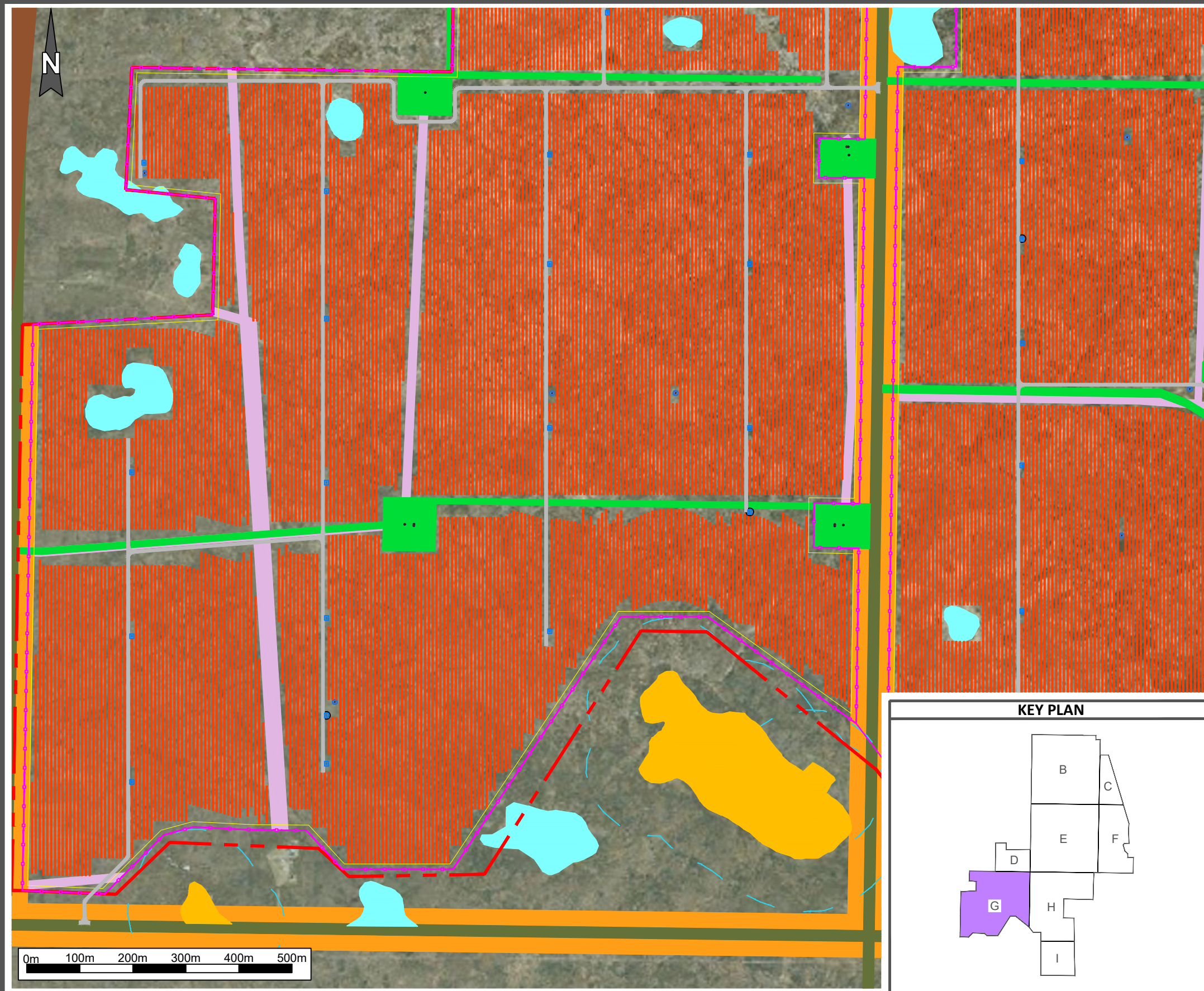
SABR Energy Consulting Inc.

DRAWING TITLE:
**RAINIER SOLAR FARM
SINGLE AXIS TRACKER LAYOUT**

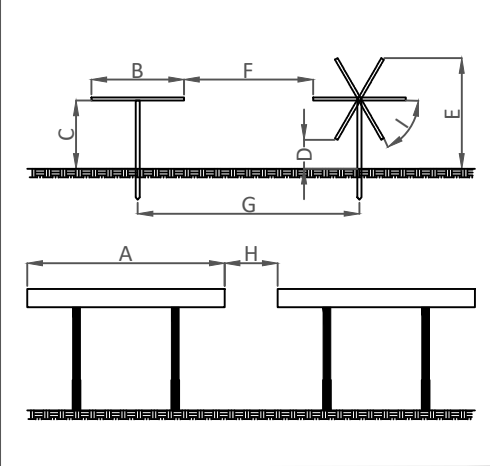
DRAWING NUMBER:
RAINIER -LAY-001-F

SHEET
1 OF 1

REVISION
B



RACKING CROSS SECTION (NTS)



A	RACKING LENGTH	33.997m
B	RACKING WIDTH	2.256m
C	NOMINAL PANEL HEIGHT	1.75m
D	MINIMUM PANEL HEIGHT	0.886m
E	MAXIMUM PANEL HEIGHT	2.614m
F	AISLE WIDTH	5.004m
G	PITCH WIDTH	7.260m
H	RACKING SPACING	0.35m
I	PLANE TILT	+/-50°
GROUND COVERAGE RATIO		31.1%

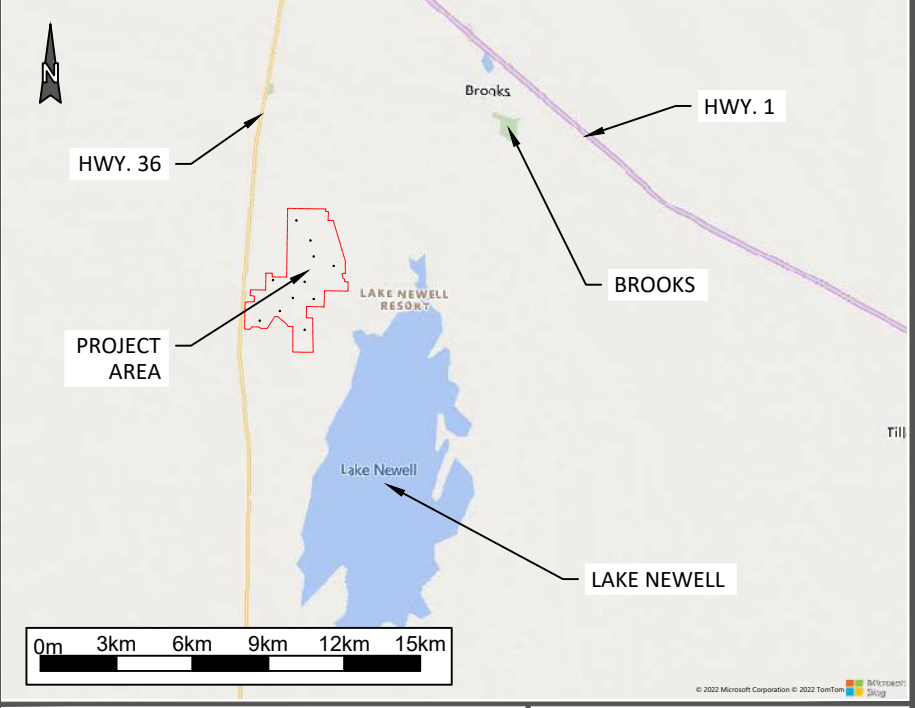
LEGEND

- PROJECT AREA
- FENCE
- FENCE SETBACK (10M)
- MODULE
- ACCESS ROAD
- PROPERTY LINE SETBACK (6m)
- FORTIS LINE
- FORTIS POLE
- FORTIS SETBACK (8m)
- ABANDONED WELL
- REGISTERED RIGHT OF WAY
- WELL LEASE
- ENCUMBRANCE
- ROAD SETBACK (30m)
- HIGHWAY 36 SETBACK (80m)
- WETLAND CLASS II
- WETLAND CLASS III
- WETLAND CLASS IV
- WETLAND CLASS V
- WETLAND SETBACK (100m)
- LAKE NEWELL SETBACK (1000m)
- INVERTER/TRANSFORMER SUBSTATION

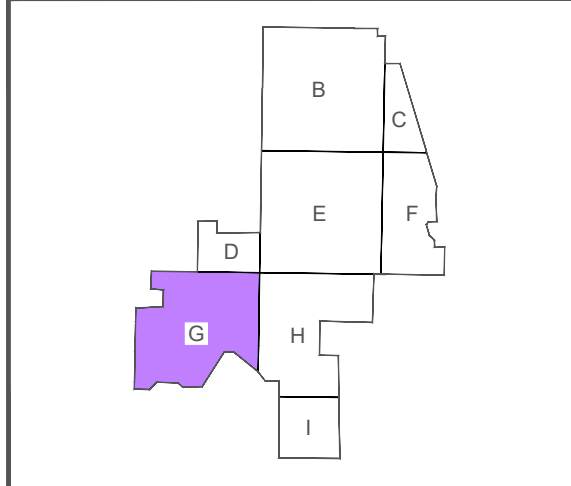
NOTES

1. Utility infrastructure is premised on available data sets and is subject to ground truthing
2. Inverter/Transformer unit Sunny Central SC4600UP

REGIONAL MAP



KEY PLAN



**PRELIMINARY:
NOT FOR CONSTRUCTION**

COORDINATES:
50.501degN, 111.990degW

DATE:
JULY 25, 2023

SINGLE AXIS TRACKER CONFIGURATION TABLE

FENCED AREA (ha)	FENCE LENGTH (m)	TRACKER 1x27 QUANTITY	MODULE RATED OUTPUT (W)	MODULE QUANTITY	INVERTER/TRANSFORMER QUANTITY	INVERTER CAPACITY (MWac)	DC CAPACITY (MWdc)	GRID CAPACITY (MWac)	DC/AC (GRID) RATIO
1096.1	37,476	32,802	545	885,654	100	460.00	482.68	450	1.07

DEVELOPER:

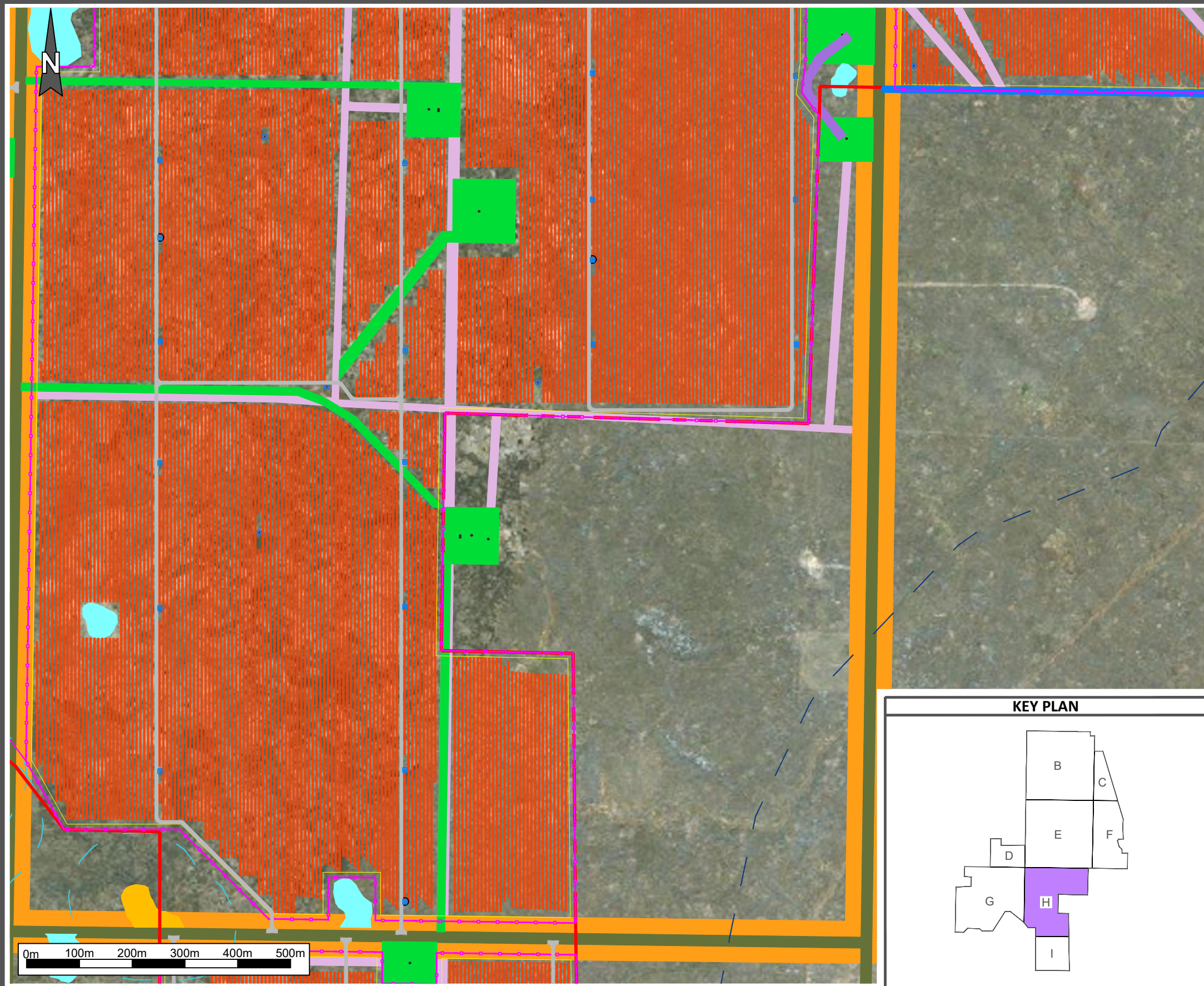
PREPARED BY:

DRAWING TITLE:
**RAINIER SOLAR FARM
SINGLE AXIS TRACKER LAYOUT**

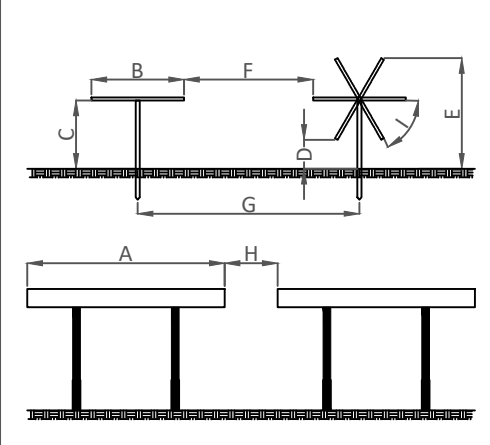
DRAWING NUMBER:
RAINIER -LAY-001-G

SHEET
1 OF 1

REVISION
B



RACKING CROSS SECTION (NTS)



A	RACKING LENGTH	33.997m
B	RACKING WIDTH	2.256m
C	NOMINAL PANEL HEIGHT	1.75m
D	MINIMUM PANEL HEIGHT	0.886m
E	MAXIMUM PANEL HEIGHT	2.614m
F	AISLE WIDTH	5.004m
G	PITCH WIDTH	7.260m
H	RACKING SPACING	0.35m
I	PLANE TILT	+/-50°
GROUND COVERAGE RATIO		31.1%

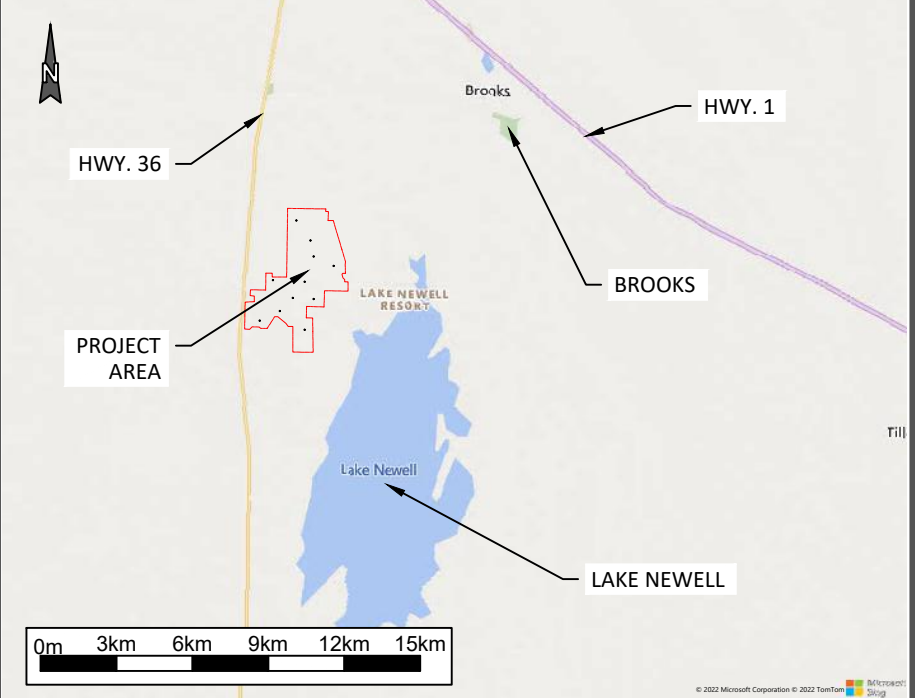
LEGEND

- PROJECT AREA
- FENCE
- FENCE SETBACK (10M)
- MODULE
- ACCESS ROAD
- PROPERTY LINE SETBACK (6m)
- FORTIS LINE
- FORTIS POLE
- FORTIS SETBACK (8m)
- ABANDONED WELL
- REGISTERED RIGHT OF WAY
- WELL LEASE
- ENCUMBRANCE
- ROAD SETBACK (30m)
- HIGHWAY 36 SETBACK (80m)
- WETLAND CLASS II
- WETLAND CLASS III
- WETLAND CLASS IV
- WETLAND CLASS V
- WETLAND SETBACK (100m)
- LAKE NEWELL SETBACK (1000m)
- INVERTER/TRANSFORMER SUBSTATION

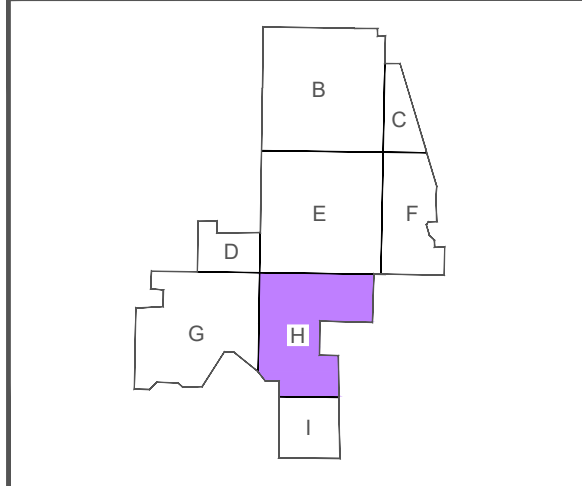
NOTES

1. Utility infrastructure is premised on available data sets and is subject to ground truthing
2. Inverter/Transformer unit Sunny Central SC4600UP

REGIONAL MAP



KEY PLAN



PRELIMINARY:
NOT FOR CONSTRUCTION

COORDINATES:
50.501degN, 111.990degW

DATE:
JULY 25, 2023

SINGLE AXIS TRACKER CONFIGURATION TABLE

FENCED AREA (ha)	FENCE LENGTH (m)	TRACKER 1x27 QUANTITY	MODULE RATED OUTPUT (W)	MODULE QUANTITY	INVERTER/TRANSFORMER QUANTITY	INVERTER CAPACITY (MWac)	DC CAPACITY (MWdc)	GRID CAPACITY (MWac)	DC/AC (GRID) RATIO
1096.1	37,476	32,802	545	885,654	100	460.00	482.68	450	1.07

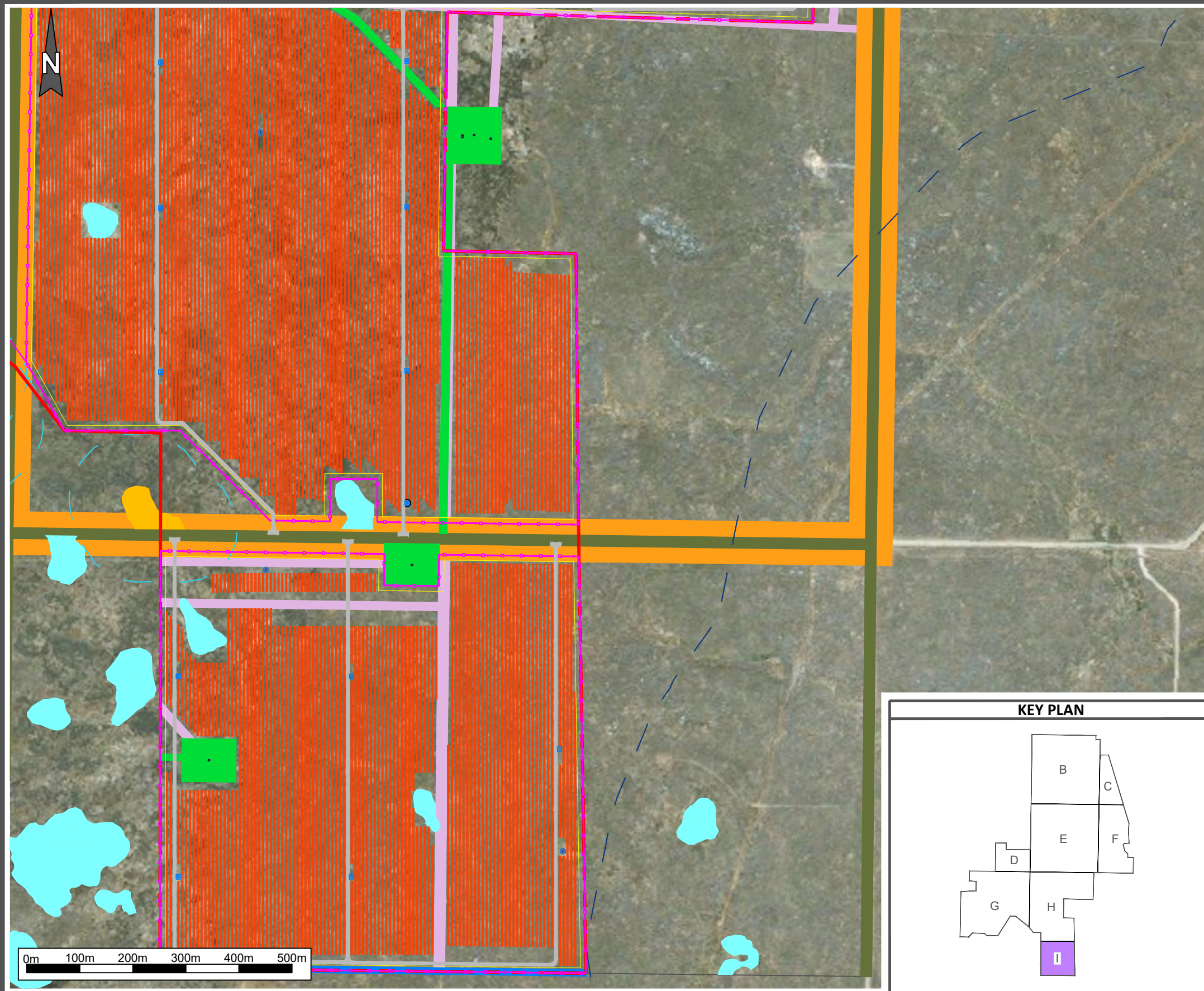
DEVELOPER:

PREPARED BY:

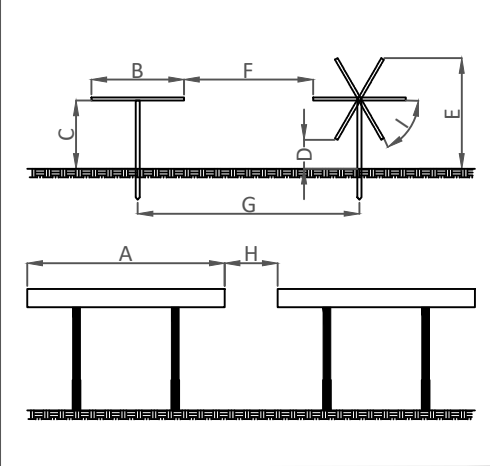
DRAWING TITLE:
**RAINIER SOLAR FARM
SINGLE AXIS TRACKER LAYOUT**

DRAWING NUMBER: RAINIER -LAY-001-H

SHEET 1 OF 1 **REVISION** B



RACKING CROSS SECTION (NTS)



A	RACKING LENGTH	33.997m
B	RACKING WIDTH	2.256m
C	NOMINAL PANEL HEIGHT	1.75m
D	MINIMUM PANEL HEIGHT	0.886m
E	MAXIMUM PANEL HEIGHT	2.614m
F	AISLE WIDTH	5.004m
G	PITCH WIDTH	7.260m
H	RACKING SPACING	0.35m
I	PLANE TILT	+/-50°
GROUND COVERAGE RATIO		31.1%

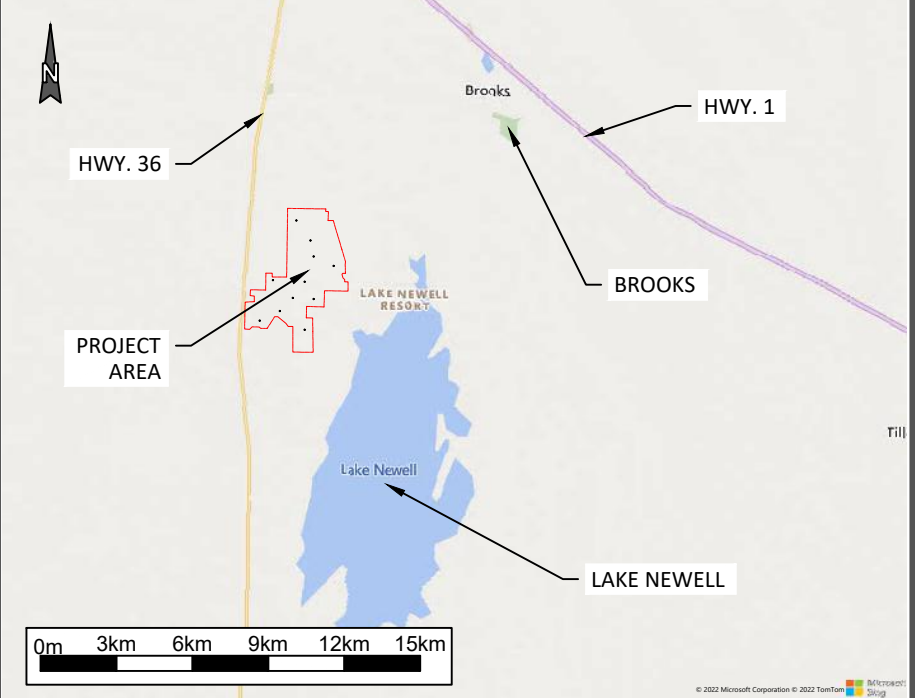
LEGEND

- PROJECT AREA
- FENCE
- FENCE SETBACK (10M)
- MODULE
- ACCESS ROAD
- PROPERTY LINE SETBACK (6m)
- FORTIS LINE
- FORTIS POLE
- FORTIS SETBACK (8m)
- ABANDONED WELL
- REGISTERED RIGHT OF WAY
- WELL LEASE
- ENCUMBRANCE
- ROAD SETBACK (30m)
- HIGHWAY 36 SETBACK (80m)
- WETLAND CLASS II
- WETLAND CLASS III
- WETLAND CLASS IV
- WETLAND CLASS V
- WETLAND SETBACK (100m)
- LAKE NEWELL SETBACK (1000m)
- INVERTER/TRANSFORMER SUBSTATION

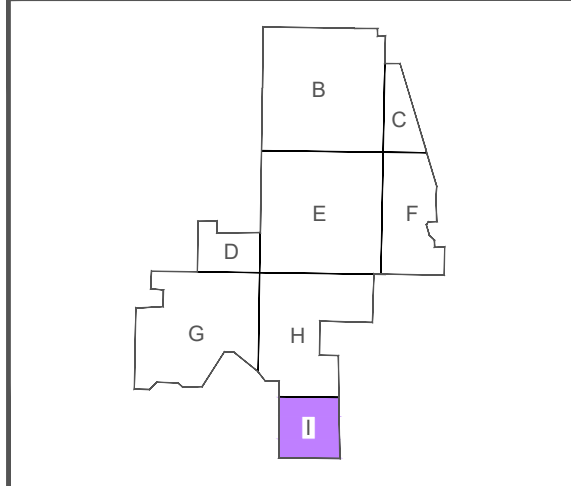
NOTES

1. Utility infrastructure is premised on available data sets and is subject to ground truthing
2. Inverter/Transformer unit Sunny Central SC4600UP

REGIONAL MAP



KEY PLAN



PRELIMINARY:
NOT FOR CONSTRUCTION

COORDINATES:
50.501degN, 111.990degW

DATE:
JULY 25, 2023

SINGLE AXIS TRACKER CONFIGURATION TABLE

FENCED AREA (ha)	FENCE LENGTH (m)	TRACKER 1x27 QUANTITY	MODULE RATED OUTPUT (W)	MODULE QUANTITY	INVERTER/TRANSFORMER QUANTITY	INVERTER CAPACITY (MWac)	DC CAPACITY (MWdc)	GRID CAPACITY (MWac)	DC/AC (GRID) RATIO
1096.1	37,476	32,802	545	885,654	100	460.00	482.68	450	1.07

DEVELOPER:



PREPARED BY:



DRAWING TITLE:

RAINIER SOLAR FARM
SINGLE AXIS TRACKER LAYOUT

DRAWING NUMBER: RAINIER -LAY-001-I **SHEET:** 1 OF 1 **REVISION:** B